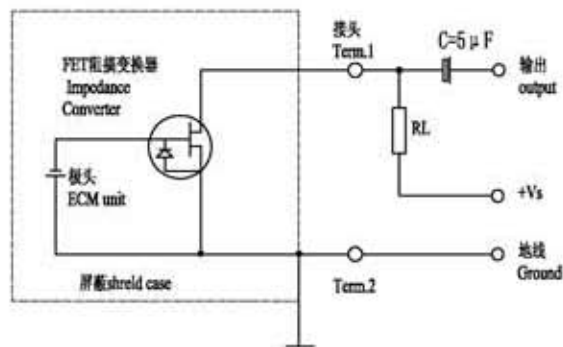


原理图



编号 NO.	项目 Items	规格 Specifications
1	额定电压 Rated Voltage	2.0V
2	工作电压 Operating Voltage	1.5V~10V
3	灵敏度 Sensitivity	-60 ± 2dB at 1KHz(0dB=1V/ μ bar)
4	消耗电流 Current Consumption	0.5mA Max
5	频率范围 Frequency	20~20,000Hz
6	信噪比 S/N Ratio	≥60dB
7	灵敏度减低 Sensitivity Reduction	within-3dB at 1.0V
8	方向性 Directivity	Omnidirectional
9	测试条件 Testing Condition	2.0V, 2.2K Ω
10	壳体材料/颜色 Shell Material/Color	AL/Silver
11	工作温度 Operating Temperature	-25~+55 °C
12	贮存温度 Store Temperature	-25~+55 °C
13	重量 Weight	0.3g
备注 Note:		

TOLERANCES UNLESS NOTED OTHERWISE X ± XX ± XXX ± 90° FORMED -2° ANGLES -1°	DRAWN		KEPO MODEL NO.	CUSTOMER		
	DESIGN		KPCM-27B-P	CUSTOMER NO.		
	CHECKED					
	APPROVED		DWG NO.	VER	1/0	SCALE
	DATE	05.03.10	KP3.841.402.07	UNIT	mm	SHEET
FIRST ANGLE PROJECTION	AGENCY APPROVAL					

△			
△			
△			
△			
NO.	DATE	REVISION	REFERENCE DWG
1			
2			