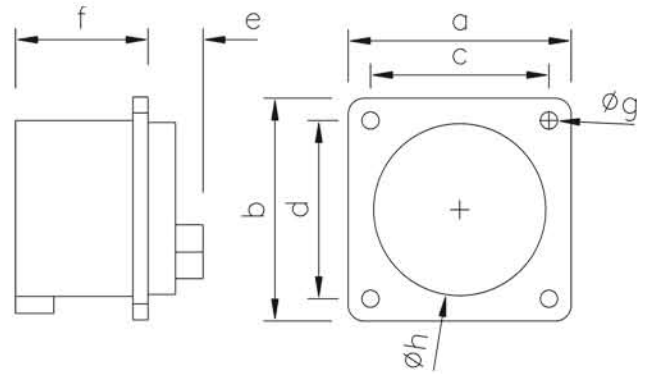


Flanged plug straight



Flange: 70x70; fixing center: 56x56

- According to EN 60309:  
For correct use a locking device has to be provided.
- to order nickel-plated contacts please add a "v" e.g. 613-6v

IP44 splashproof

Ampere	16	16	16	32	32	32
Pole	3	4	5	3	4	5
Flansch a x b	70	70	70	70	70	70
Lochabst. c x d	56	56	56	56	56	56
e	25	25	26	30	30	30
f	41	41	42	50	50	50
g	5	5	5	5	5	5
h	43	43	55	55	55	55
Gewicht in Gramm	87	100	112	140	160	178
Term						
Kontaktschrauben						
Leitung						