

Mounting box

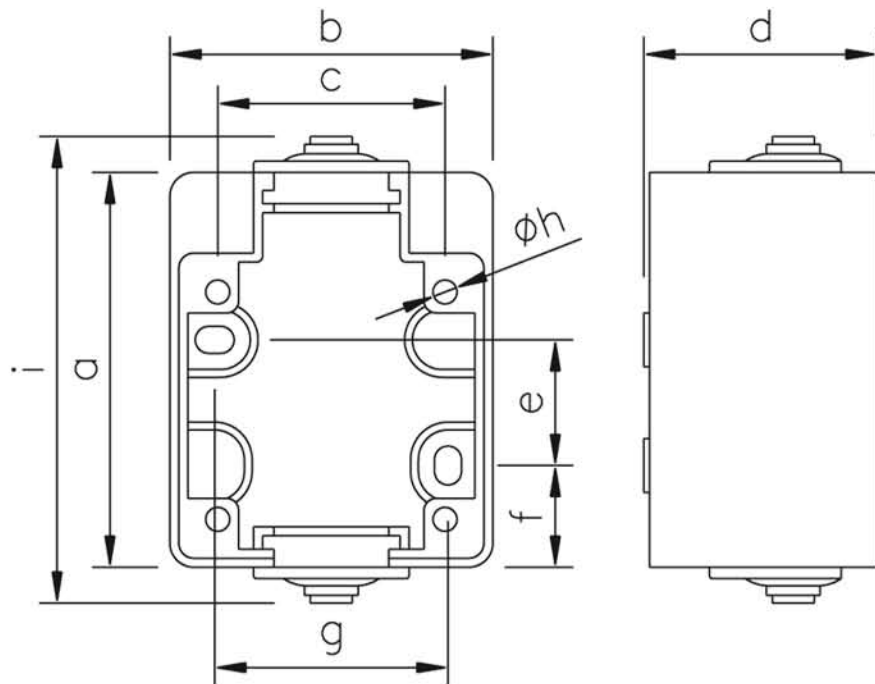
Advantages:

- easy mounting - long holes for screws
- hole distance dimensions - on the rear
- space between wall and box by nipples
- 2 entries for PG 13,5
- holes for dehydration available

Fields of application:

designed for use in workshop halls, garages, industrial plants, outside walls,...

Mounting box is supplied complete.



- for sockets acc. to DIN 49440 with flange 50x50mm (exception: 1013-0b and 1025-0r)

IP44 splashproof

Ampere

Pole

Gewicht in Gramm

Term

Kontaktschrauben

Leitung

Ampere Pole