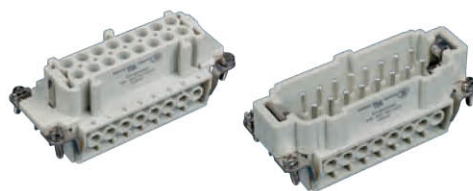


# HE-016接插体/HE-016 inserts

芯件适配H16B外壳  
Inserts suit for H16B Hood/housing

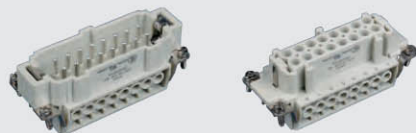
16 + 



500V max. 16 A

外型尺寸(mm)  
Dimensions mm

螺钉压接  
Screw terminal



订货号/Order No.

公接插体/Male insert

母接插体/Female insert

型号  
Type

2 04 016 2101

2 04 016 2201

HE-016-M  
HE-016-F

HE  
HEE

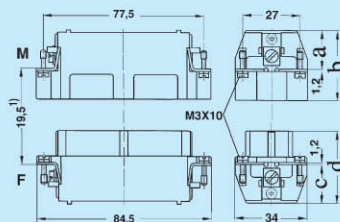


(镀银)冷压接插针  
Crimp contacts, silver-plated

标识 Identification	线规 Wire gauge	型号/Type		订货号/Order No.		
		公插针/Male	母插针/Female	公插针/Male	母插针/Female	
no groove	0.5 mm <sup>2</sup>	AWG 20	CEM-0.5	CEF-0.5	2 03 000 1005	2 03 000 2005
1 groove	0.75 mm <sup>2</sup>	AWG 18	CEM-0.75	CEF-0.75	2 03 000 1008	2 03 000 2008
1 groove	1.0 mm <sup>2</sup>	AWG 18	CEM-1.0	CEF-1.0	2 03 000 1010	2 03 000 2010
2 groove	1.5 mm <sup>2</sup>	AWG 16	CEM-1.5	CEF-1.5	2 03 000 1015	2 03 000 2015
3 groove	2.5 mm <sup>2</sup>	AWG 14	CEM-2.5	CEF-2.5	2 03 000 1025	2 03 000 2025
no groove	4.0 mm <sup>2</sup>	AWG 12	CEM-4.0	CEF-4.0	2 03 000 1040	2 03 000 2040

(镀金)冷压接插针  
Crimp contacts, Gold-plated

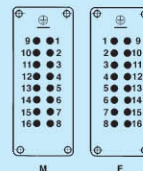
标识 Identification	线规 Wire gauge	型号/Type		订货号/Order No.		
		公插针/Male	母插针/Female	公插针/Male	母插针/Female	
no groove	0.5 mm <sup>2</sup>	AWG 20	DEM-0.5	DEF-0.5	2 03 001 1005	2 03 001 2005
1 groove	0.75 mm <sup>2</sup>	AWG 18	DEM-0.75	DEF-0.75	2 03 001 1008	2 03 001 2008
1 groove	1.0 mm <sup>2</sup>	AWG 18	DEM-1.0	DEF-1.0	2 03 001 1010	2 03 001 2010
2 groove	1.5 mm <sup>2</sup>	AWG 16	DEM-1.5	DEF-1.5	2 03 001 1015	2 03 001 2015
3 groove	2.5 mm <sup>2</sup>	AWG 14	DEM-2.5	DEF-2.5	2 03 001 1025	2 03 001 2025
no groove	4.0 mm <sup>2</sup>	AWG 12	DEM-4.0	DEF-4.0	2 03 001 1040	2 03 000 2040



1)接插体之间最大距离21mm/Distance for contact max. 21mm

	a	b	c	d
HE	18	33	18	35
HES/HEC	19	34	19	36
HESS	34	49	32	49

接插针排序  
Contact arrangement View  
from termination side



板面安装开孔图  
Panel cut out for inserts  
for use without hoods/housings

